



BRAZEE GLASS DESIGN

LOOKBOOK VOLUME 1

After you leave a place, *what memories of it do you take with you?*



Brazee Glass Design is driven by the power we have to transform spaces and imbue them with greater meaning. Every day our personal stories overlap and intermix in beautiful ways—but too often, what might bring us together just passes us by. Now more than ever, we're searching for shared experiences.

We see the opportunity to awaken minds and forge deeper connections through glass. Like all of us, glass begins rich and raw from the earth, full of organic possibility. Brazee designers draw on roots in sculpture and painting to push boundaries in glass design. To create beauty and strength. To capture symbolism that articulates our ties to each other and to nature.



We tell dimensional stories at boundless scale to create moments and places people don't just pass by, but that call us together to inspire.

CUSTOM TILE BACKSPLASH

Midtbo-Klein Residence

When you pad down the stairs for your morning coffee, wouldn't you like to be met with happiness? Inspiration takes vibrant shape in this kitchen, with color, pattern and line creating movement and energy.





Painterly references are translated into creative expression in *bold, geometric glass forms*.

Carefully embossed motifs meet bright hues dialed up for impact, meticulously arranged with satisfying precision.



The resulting backsplash relates to other pieces in the homeowners' art collection and throughout their favorite works. They are also evidence of people in a home having complete, and total, fun.

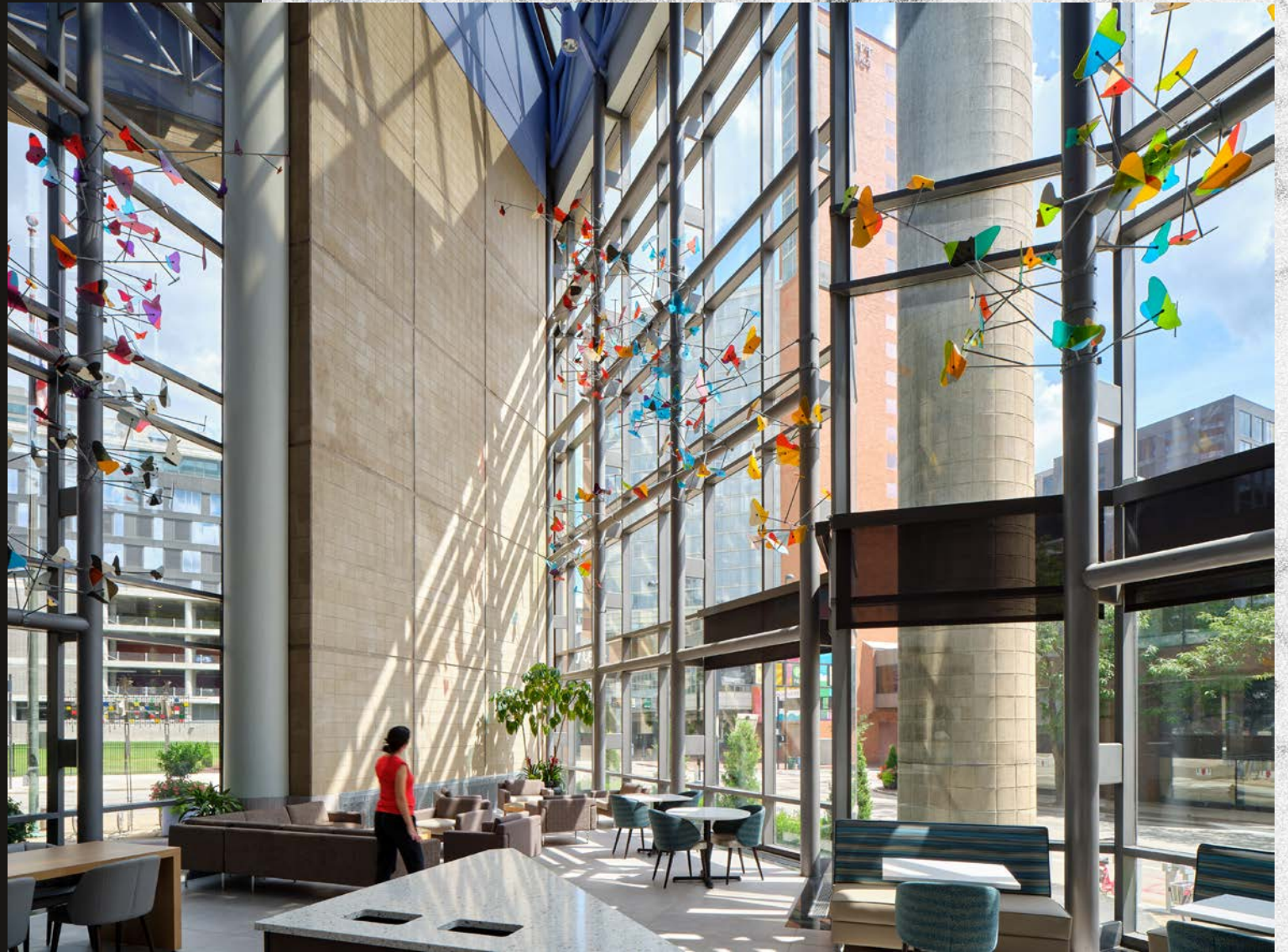


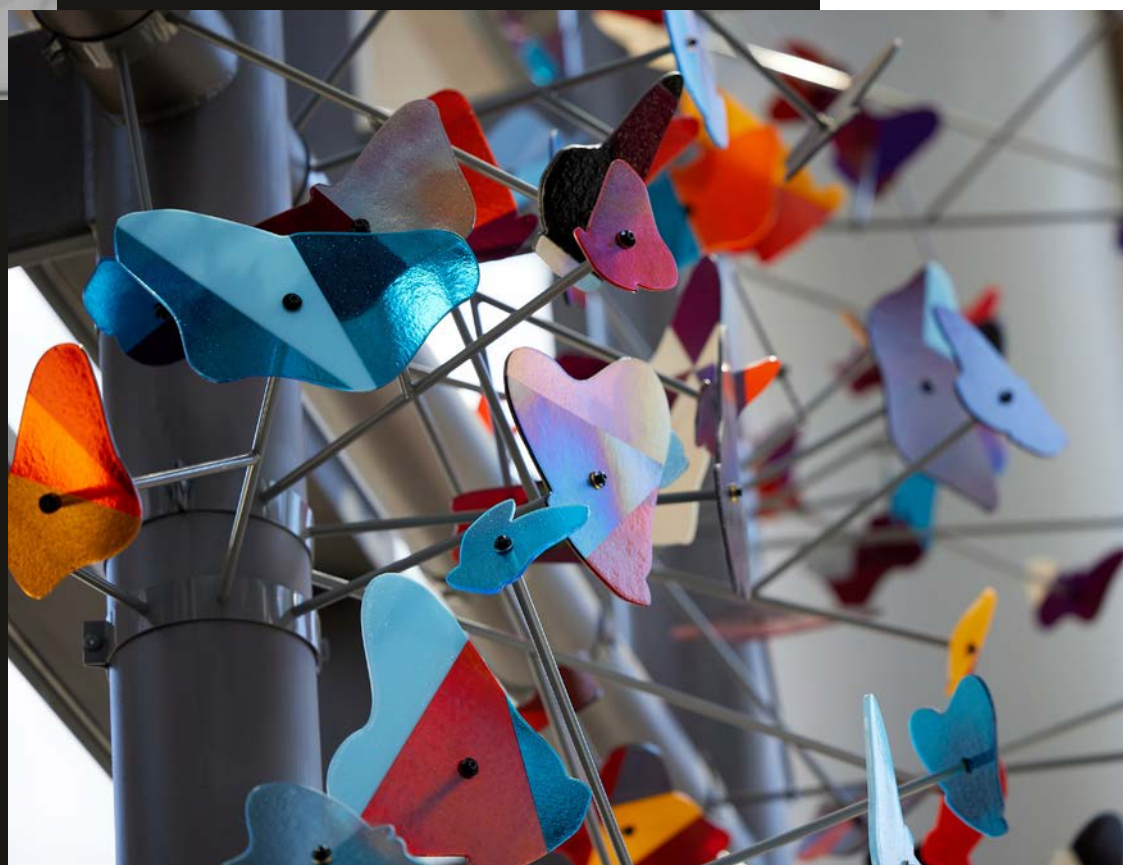
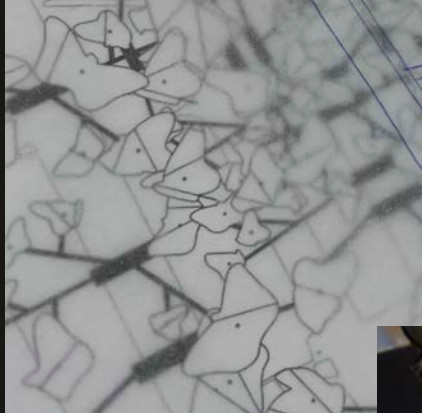
A showstopper, if you will.

LARGE SCALE INSTALLATION

Duke Energy Convention Center

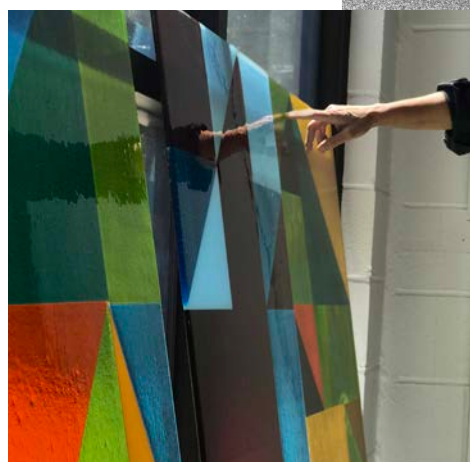
Within the 750,000 square foot Duke Energy Convention Center, visitors from near and far gather in grand spaces for major exhibitions, important meetings, and lively ballroom events. In a café atrium, they find a moment of reflection.

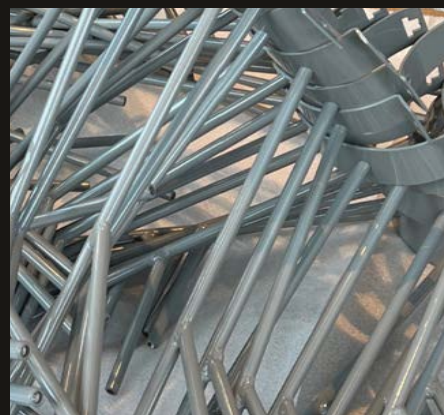
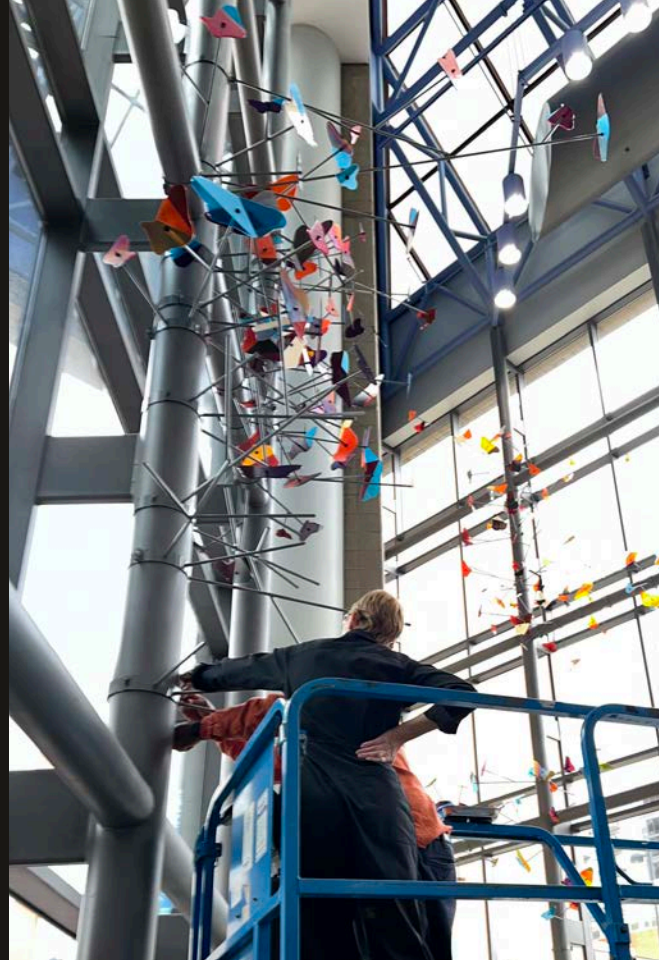




Like butterflies who traverse incredible distances in their pollinator journeys before returning home, visitors come here to meet, acquire knowledge and exchange information. They're enriched by their unique experience, and when they make their way home, it is with newfound perspective to share.

In a soaring atrium,
new ideas *take flight*.





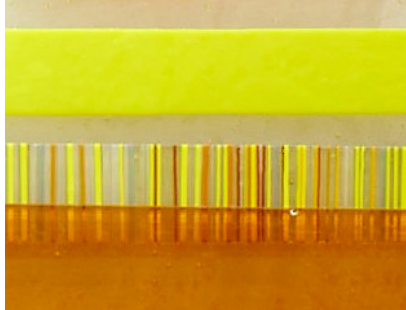
A wall of windows stretches to the sky, as an installation of more than 1,000 works of glass evoke the spirit of butterflies rising in a riotous flight of color. Changes in light and weather through the glass reflect an ever-changing kaleidoscope of patterns. The atrium never reveals the same experience twice.



Kemba Credit Union

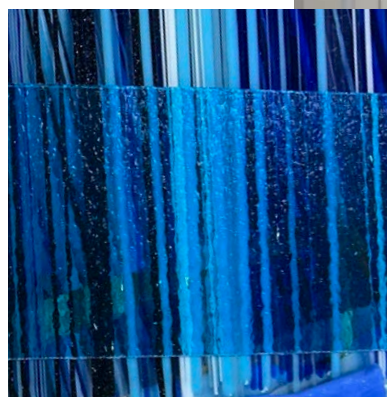
Upward momentum is found at the West Chester, Ohio, headquarters of Kemba Credit Union, where their brand characteristics are revealed at every turn in a multi-part stairway installation.



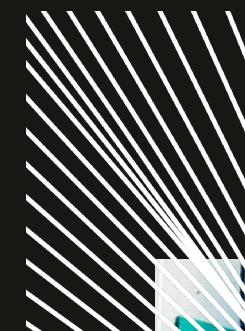


Their mission is made
 clear in vivid colors:
*within this corporate setting
 lives passion, and purpose.*

This not-for-profit financial institution was
 founded in 1933 and has become a leader in
 the industry. Every day, they work to help their
 member-owners build wealth and climb the
 ladder toward their goals.



Like that ladder, rich bands of glass now
 progress in a smooth, pleasingly sequential
 color story along the stairs. As this piece
 unfolds it serves as a reminder of their
 greater purpose: to help each other continue
 moving forward, every step of the way.



B

Private Residence

Look out the window of this home and you're high among the treetops, nestled in the woods above sturdy walnut trees and fresh open air. The natural world is brought indoors with an installation that's part lighting, and part sculpture.





A steel armature acts as a tree ring to support organic glass forms. Their soft lines glow from the lights up above, evoking tree bark and serving as a focal point to draw your eyes skyward.



Each segment of the piece
reveals the designer's hand.

Various sized bubbles fired into different types of glass reveal or obscure light in endlessly compelling variations, and the fixture alights like a form in nature, at ease in its setting as it promotes a sense of harmony and warmth.



A take on the
traditional chandelier.

Tree Bark & Prairie Tiles

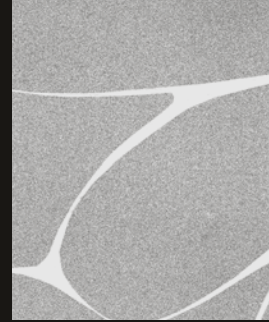
Glass is natural. It's sand, soda and lime, heat and time, and the artist's influence. Suddenly, it becomes something more. Something beautiful. In this case, a line of custom tile.





Once fired, glass holds its color and line. It is also quite strong, durable, even sanitize-able, the ideal material to bring creative designs to life in a variety of settings.

Inspired by the beauty
of the *natural* world.



These tiles were inspired by blooms of echinacea and curls of tree bark. The original vision led to patterns created in cut paper, then translated into glass. The resulting tile collection nods to the prairies and forests from where it came, while offering a modern impact all its own.



Cincinnati Shakespeare Company

This powerhouse theater brings classics to life for modern audiences. When you attend a performance of the Cincinnati Shakespeare Company, you're drawn into a community dialogue.

For some time, the company envisioned an intimate new space to better bring world-class performances within reach. Thanks to generous donations, today you can take a seat and be part of the experience in one of six rows, all less than 20 feet from the stage, at the Otto M. Budig Theater in Over-the-Rhine.

Modern medallions recognizing those donors were designed to be *fully integrated into the space* during the architectural process.

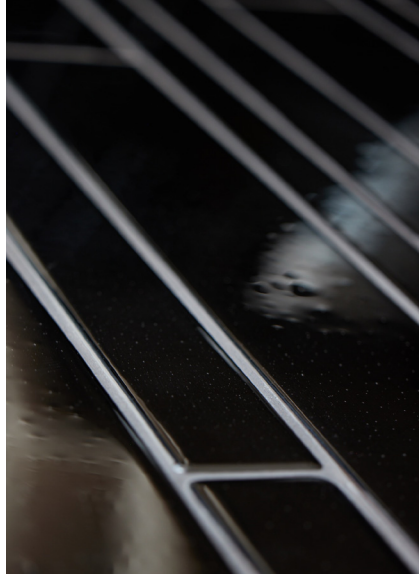


Each medallion bears the donor's name and the iconic Shakespeare feather rendered in rich gold, with new pieces added over the years to reflect a growing well of support.

Aster Social Sippery

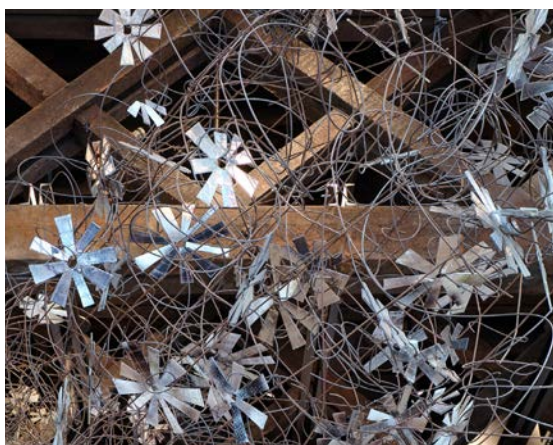
Some spaces feel powerful the moment you walk in the door. Especially when you realize walls are...optional. At Aster Social Sippery, inside and outside blend in one harmonious atmosphere, bathed with natural light, as the ceiling stretches into the clouds and one side yawns open to welcome the elements.



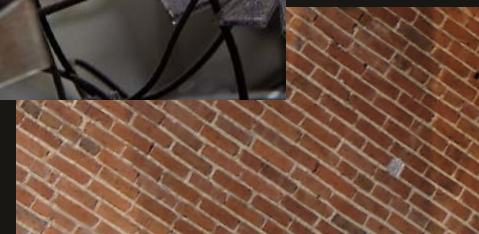


The bar experience, *elevated.*

Above the center of the space,
wire winds into gestural lines,
which take shape around one
another, adorned with blooms
of float glass.



You are invited to perch here, sip,
and embrace the company of
others and wind up or unwind as
you wish. To keep your heart as
light and open, and unfettered,
as the space itself.



Sleepy Bee Café Downtown

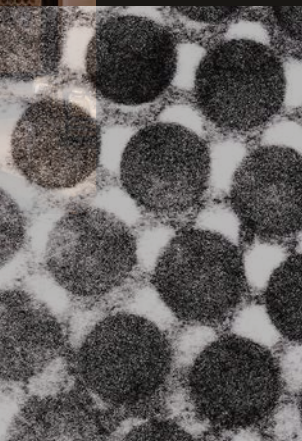
In the heart of Cincinnati's Central Business District lives a friendly space that welcomes you in with open arms. The Sleepy Bee aims to nourish its community in mind, body and spirit.



Welcome,
and please *enjoy*.



Known as a gathering spot offering delightful seasonal creations, crafted with locally sourced ingredients, it is only fitting that the space itself is imbued with a similarly natural sense of amiability and playfulness.



Happy, high-impact polychromatic patterns sweep across the ceiling in undulating ribbons, bringing vibrance that reflects the busy action below. This glass chandelier is set amidst original brick, high ceilings and massive wood beams, an element as at home in its space as bees on prairie flowers.



Brazee Glass Design is a female-owned and operated studio led by Sandra Gross and Leah Busch Rockel. Sandra and Leah are drawn to discover new ways of communicating through glass, including collaborating with clients to translate their vision into art that shares symbolism and meaning.

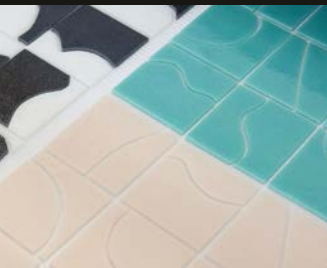


Sandra and Leah draw on classical training in diverse artistic mediums to push boundaries in glass design. Sharing complimentary artistic sensibilities, they have worked together for more than 20 years.

Brazee believes strongly
in making a *positive impact in our
community, our shared spaces,
& in our world.*



They are continually driven to explore new forms of expression through glass that uplift and enliven our surroundings and ourselves.



Since 2010, Brazee
has been dedicated
to *preserving the natural
environment & reducing
our impact on it.*

The studio is housed in a
carefully repurposed 21,000
square foot factory, now a LEED
Silver Certified green building.



The surrounding landscape is thoughtfully
designed to benefit the local habitat and
creatures of all kinds. Features include a
monarch butterfly conservation waystation,
beehives, a bioswale rain garden to convey
stormwater runoff, and gardens brimming
with native plants and prairie grasses. The
building's rooftop features a 35.5kW solar
panel system, the first of its kind in Ohio.



Brazee designers work with an
appreciation for the importance
of small details. The studio
primarily uses Bullseye Glass,
and works with a local team of
metal fabricators to bring their
designs to life.

Sandra Gross

As an artist, she explores the interplay between light and time, and how the human experience equates to what happens inside the kiln.



Sandra's early career focused on bronze sculpture. Just as she began to explore how to thinly cast bronze to capture light, a chance experiment with a piece of glass she found by the road changed the course of her work entirely. She spent the rest of her graduate study observing the way glass melted and changed in the kiln, and as she watched projects through a tiny peephole to catch them precisely in their peak flow state, she was awed by the transformative properties of glass and what could be said through it.

Throughout her M.F.A. and studies at Pilchuck and Corning, and through today, Sandra thrills in opening the kiln and continuing to experiment. She believes there is always more to learn, and enjoys sharing what she has learned with others through both formal and informal education programs.

Leah Busch Rockel

In her work, she explores the push-pull between transparency and opaqueness, representational and abstract, and how opposing forces coalesce in two dimensions.

Leah studied painting and drawing at the Art Institute in Chicago, seeing and representing the world in 2D and exploring pattern design and color. After her M.F.A., she began to enjoy how glass as a material can retain pattern within it, how it can hold and shift color in interesting ways, and how it can offer depth and dimension through its surface quality to skew your impression of it. She continues to explore glass's potential to both contain and communicate multitudes.

Leah is inspired by light and nature, and the ability of spaces to serve as a catalyst for something more. She enjoys shaping ideas with collaborators to help them tell their stories and engaging in community projects across the region to inspire the next generation.



SANDRA GROSS



GRAY DRAPER

LEAH BUSCH ROCKEL



ANGIE UNGER



LAURYN JONES

Coming from varied artistic backgrounds, each team member *contributes a unique perspective in glass*. They thrive on new ideas, techniques, and *a greater sense of purpose*.

Services

Commercial

RETAIL + HOSPITALITY DESIGN
LIGHTING INSTALLATION
HANGING SCULPTURE
CUSTOM BRANDED GLASS
CORPORATE ART
CORPORATE AWARDS
DONOR RECOGNITION
LIMITED EDITIONS
GIFTS

Residential

BESPOKE TILE
OBJECTS D'ART
CUSTOM GLASS ART
LIGHTING DESIGN
ARCHITECTURAL GLASS

CONTACT BRAZEE GLASS DESIGN FOR INQUIRIES
INFO@BRAZEESTREETSTUDIOS.COM
BRAZEESTUDIOS.COM 513-321-0206

INFO@BRAZEESTREETSTUDIOS.COM

4426 BRAZEE ST. • CINTI, OH 45209

513-321-0206

BRAZEESTUDIOS.COM

